

## Seattle Celtic Green B02

Seattle Celtic  
Seattle, WA

B02 total strength=595  
attack=0.6 defense=0.41

fall league = PSPL WSPL U11, Spr PSPL Clas:  
alt names used:

Seattle Celtic Green

SEATTLE CELTIC B02 ()

Seattle Celtic B02 Green

SEATTLE CELTIC B02 GREEN (WA)

Venues played:

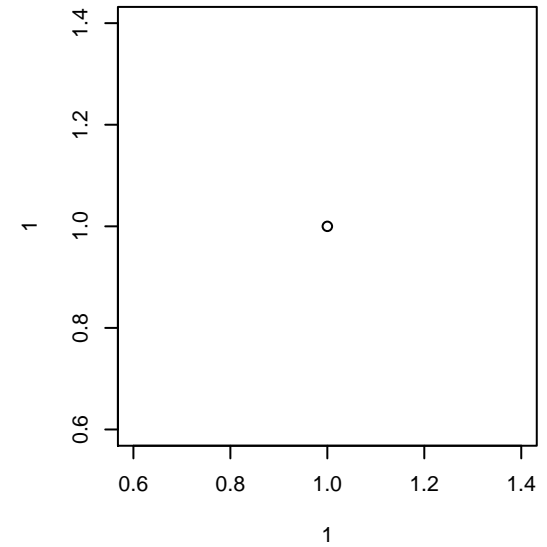
Seattle Cup BU11

Bigfoot Gold U11

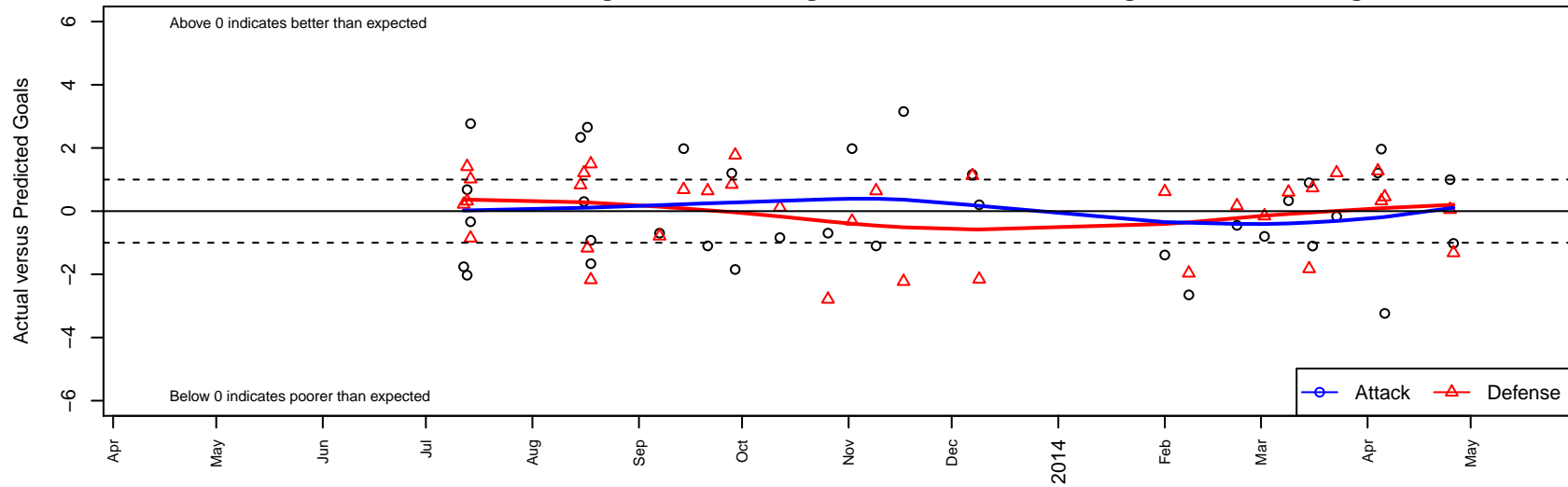
PSPL WSPL U11

Spr PSPL Classic 1 U12

WA Cup BU11 Gold/Silver U11



**Seattle Celtic Green B02**  
Dots are actual minus expected GF (blue circles) and GA (red triangles).  
Blue line is smoothed change in attack strength. Red is smoothed change in defense strength.



	<b>date</b>	<b>home</b>		<b>away</b>		<b>venue</b>	<b>pred.home</b>	<b>pred.away</b>
26712	2014-04-26	Normandy Park FC White B02	3	Seattle Celtic Green B02	0	WA Cup BU11 Gold/Silver U11	1.68	1.02
26679	2014-04-25	Seattle Celtic Green B02	4	Washington East SC B02	2	WA Cup BU11 Gold/Silver U11	3.00	2.05
25843	2014-04-06	NW United Wedge B02	1	Seattle Celtic Green B02	0	WA Cup BU11 Gold/Silver U11	1.45	3.24
25617	2014-04-05	Seattle Celtic Green B02	5	Pumas 03 UNAM B02	1	WA Cup BU11 Gold/Silver U11	3.04	1.32
25571	2014-04-04	Seattle Celtic Green B02	4	Emerald City FC Green B02	0	WA Cup BU11 Gold/Silver U11	2.79	1.27
25334	2014-03-23	Seattle Celtic Green B02	1	MVP Rapids Navy B01	1	Spr PSPL Classic 1 U12	1.17	2.21
24946	2014-03-16	Sparta Red B01	1	Seattle Celtic Green B02	0	Spr PSPL Classic 1 U12	1.73	1.10
24617	2014-03-15	Seattle Celtic Green B02	2	Central WA SA Navy B01	5	Spr PSPL Classic 1 U12	1.10	3.18
24262	2014-03-09	Seattle Celtic Green B01	2	Seattle Celtic Green B02	1	Spr PSPL Classic 1 U12	2.60	0.67
23706	2014-03-02	ISC Gunners A B02	3	Seattle Celtic Green B02	0	Spr PSPL Classic 1 U12	2.85	0.80
22983	2014-02-22	Seattle Celtic Green B02	0	Emerald City FC Green B01	3	Spr PSPL Classic 1 U12	0.45	3.17
22276	2014-02-08	Cascade FC Green B01	3	Seattle Celtic Green B02	0	Spr PSPL Classic 1 U12	1.04	2.65
21996	2014-02-01	Seattle Celtic Green B02	0	ISC Gunners B B01	1	Spr PSPL Classic 1 U12	1.39	1.62
20748	2013-12-09	Seattle Celtic Green B02	1	ISC Gunners A B02	5	PSPL WSPL U11	0.80	2.85
20568	2013-12-07	WPFC Fury White B02	0	Seattle Celtic Green B02	5	PSPL WSPL U11	1.12	3.84
18727	2013-11-17	Wenatchee Fire Black B02	4	Seattle Celtic Green B02	5	PSPL WSPL U11	1.77	1.85
17606	2013-11-09	Seattle Celtic Green B02	1	Highline Premier -Unk B02	0	PSPL WSPL U11	2.10	0.64
16606	2013-11-02	Normandy Park FC White B02	2	Seattle Celtic Green B02	3	PSPL WSPL U11	1.68	1.02
15724	2013-10-26	MVP Rapids Navy B02	5	Seattle Celtic Green B02	1	PSPL WSPL U11	2.21	1.70
13737	2013-10-12	Seattle Celtic Green B02	3	WPFC Fury White B02	1	PSPL WSPL U11	3.84	1.12
12268	2013-09-29	Seattle Celtic Green B02	0	Wenatchee Fire Black B02	0	PSPL WSPL U11	1.85	1.77
11792	2013-09-28	ISC Gunners A B02	2	Seattle Celtic Green B02	2	PSPL WSPL U11	2.85	0.80
10818	2013-09-21	Highline Premier -Unk B02	0	Seattle Celtic Green B02	1	PSPL WSPL U11	0.64	2.10
9849	2013-09-14	Seattle Celtic Green B02	3	Normandy Park FC White B02	1	PSPL WSPL U11	1.02	1.68
8911	2013-09-07	Seattle Celtic Green B02	1	MVP Rapids Navy B02	3	PSPL WSPL U11	1.70	2.21
7345	2013-08-18	Seattle Celtic Green B02	1	Cascade FC Green B02	0	Bigfoot Gold U11	1.92	1.49
7347	2013-08-18	Seattle Celtic Green B02	0	FWFC Blue B02	4	Bigfoot Gold U11	1.66	1.83
6921	2013-08-17	Eastside FC White B02	3	Seattle Celtic Green B02	4	Bigfoot Gold U11	1.83	1.34

	<b>date</b>	<b>home</b>		<b>away</b>		<b>venue</b>	<b>pred.home</b>	<b>pred.away</b>
6714	2013-08-16	MVP Rapids Navy B02	1	Seattle Celtic Green B02	2	Bigfoot Gold U11	2.21	1.70
6648	2013-08-15	FWFC Blue B02	1	Seattle Celtic Green B02	4	Bigfoot Gold U11	1.83	1.66
3169	2013-07-14	Seattle United W White B02	0	Seattle Celtic Green B02	6	Seattle Cup BU11	1.02	3.23
3170	2013-07-14	Seattle United S Black B02	4	Seattle Celtic Green B02	1	Seattle Cup BU11	3.15	1.34
2911	2013-07-13	Seattle Celtic Green B02	7	Slammers White B02	0	Seattle Cup BU11	6.32	0.32
2917	2013-07-13	Seattle United W Blue B02	0	Seattle Celtic Green B02	0	Seattle Cup BU11	1.41	2.03
2724	2013-07-12	Seattle Celtic Green B02	10	Cascade FC Black B02	0	Seattle Cup BU11	11.76	0.22